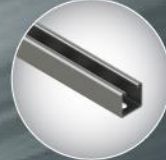
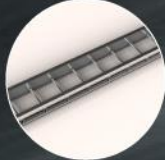
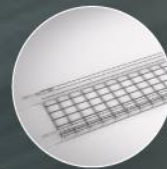




AWMA | October 11, 2017



CONFIDENTIAL

About Atkore International Group Inc.

- Atkore International Group Inc. delivers a unique portfolio of **integrated electrical raceway solutions** that deploy, isolate and protect a structure's electrical circuitry from source to outlet.
- With **3,200 employees and 58 manufacturing and distribution facilities worldwide**, we meet our customers' needs by providing unmatched quality, delivery and value across a robust product line that includes steel, PVC and aluminum conduit, armored cable and flexible conduits, metal framing, wire baskets, cable trays and other complementary products including fittings and mechanical tube.

ACS Unifab

AFC Cable Systems

Allied Tube & Conduit

» Conduit

» Mechanical Tube

» Traffic Products

American Pipe & Plastics

Atkore International

Cobra Systems

Columbia-MBF

Cope

Eastern Wire + Conduit

Flexicon Limited

Flexhead

Heritage Plastics

Kaf-Tech

Konkore Fittings

Marco Cable Management

Power-Strut

Razor Ribbon

Ridgeline Pipe

Sprinkflex

Steel Components Inc

Tectron Tube

Unistrut

Unistrut Construction



Atkore International delivers a unique

portfolio of integrated electrical raceway solutions that deploy, isolate and protect a structure's electrical circuitry from curb to outlet. Atkore's mission is to be the customer's first choice for electrical raceway and complementary high value products, by providing unmatched quality, delivery and value based on sustainable excellence in strategy, people and processes.

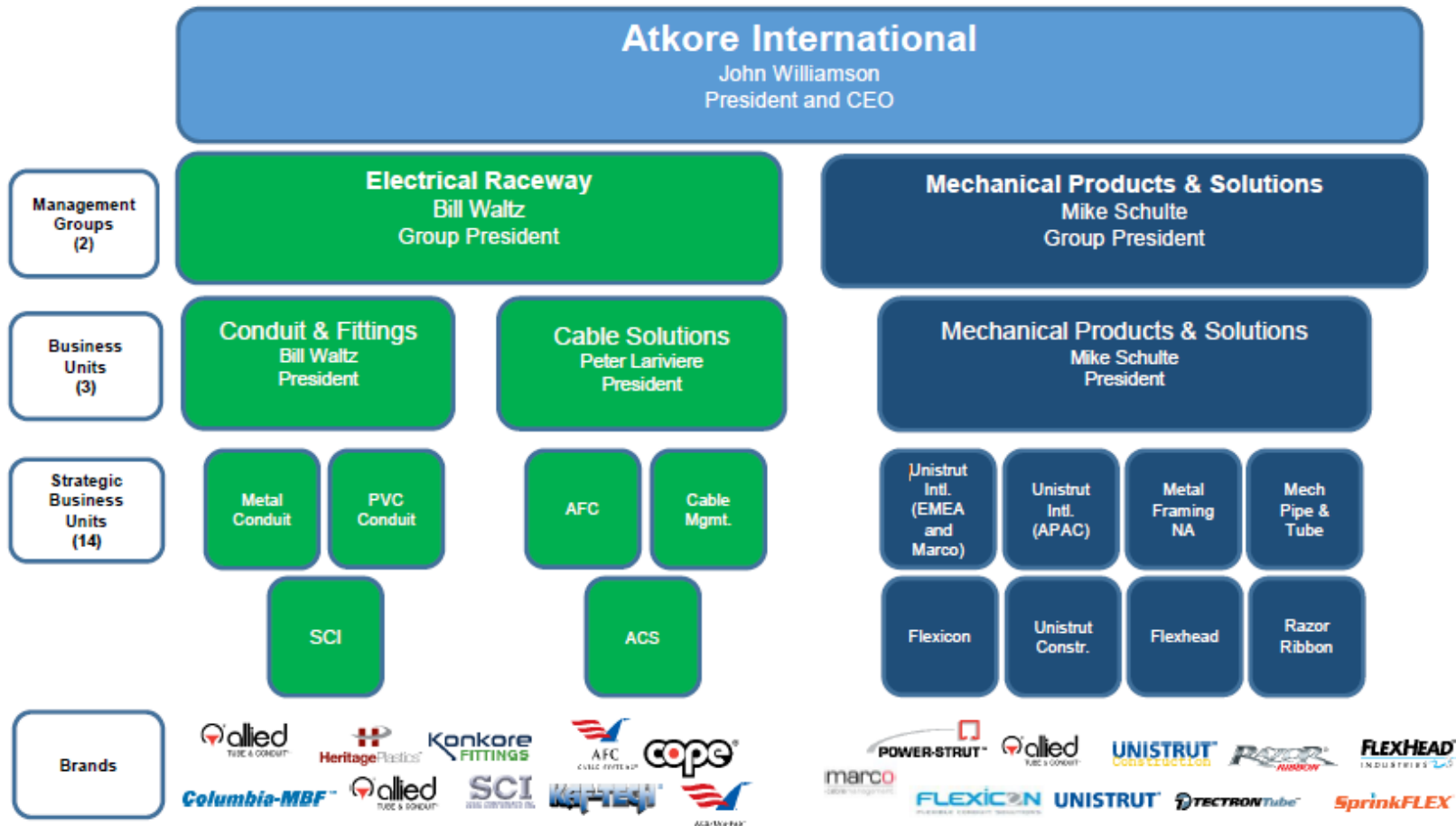


Atkore International Group Inc. Acquires Calpipe Industries LLC

10.02.17

HARVEY, III--(BUSINESS WIRE)-- Atkore International Group Inc. ("Atkore"), today announced that it has acquired Calpipe Industries, LLC., a market leader for electrical conduit systems for corrosive environments and security bollards for high security, access control and architectural environments (www.calpipe.com).

Atkore Group and Management Structure



Daily SQDCI communications



We do what gets measured!

Audit Process

Facility Tour/Inspection

Environment, Health & Safety

A blue callout box with a white border and a pointer pointing towards the 'Environment, Health & Safety' text. It contains the text 'Daily status 10:00 AM' in white.

Daily status 10:00 AM

Focus Audit:

- Machine Safeguards and Control of Hazardous Energy “LOTO”
- Working at Height/Fall Protection
- Stormwater Compliance

Core Management System “Calibration”

Kaizen Event – Electrical Program/Best Practices and CMS?

Closing meeting

Critical issues will be communicated immediately

Improvement: Storm Water Compliance



Process	Problem	Improvement	Impact
Storm Water Inspections	X Plant had not performed	Completed quarterly and annual inspections; and created an activities dashboard.	Stormwater Permit Compliance

Quarterly Inspection Report
STORM WATER POLLUTION PREVENTION PLAN
HERITAGE PLASTICS CENTRAL, INC.
WEATHERFORD, TEXAS

Date: July 13, 2018
Inspector: Clyde Walker

Annual Compliance Evaluation Report
STORM WATER POLLUTION PREVENTION PLAN
HERITAGE PLASTICS CENTRAL, INC.
WEATHERFORD, TEXAS

Heritage Permit
100 North 40th Street
Weatherford, Texas

Quarterly Inspection Report
STORM WATER POLLUTION PREVENTION PLAN
HERITAGE PLASTICS CENTRAL, INC.
WEATHERFORD, TEXAS

Date: July 13, 2018
Inspector: Clyde Walker

Annual Compliance Evaluation Report
STORM WATER POLLUTION PREVENTION PLAN
HERITAGE PLASTICS CENTRAL, INC.
WEATHERFORD, TEXAS

Heritage Permit
100 North 40th Street
Weatherford, Texas

Stormwater Plan

	JAN	FEB	MAR	APR	MAY	JUN	JUL	AUG	SEP	OCT	NOV	DEC
Inspections												
Routine Site Inspections (Monthly)	X	X	X	X	X	X	X	X	X	X	X	X
Visual Inspections (Quarterly)			X		X			X			X	
Comprehensive Site Compliance (Annual)	X											
Note: Corrective actions from Comprehensive are required to be closed within 30 days.												
Monitoring	JAN	FEB	MAR	APR	MAY	JUN	JUL	AUG	SEP	OCT	NOV	DEC
Water Quality (Annual) for BOD5, COD, Bacteria, Hazardous Metals	X	X	X	X	X	X	X	X	X	X	X	X
Benchmark Monitoring (twice a year: Jan-Jun & Jul-Dec) Zinc, Total 0.16 mg/L												
Benchmark Report (Annually)			X									
Training	JAN	FEB	MAR	APR	MAY	JUN	JUL	AUG	SEP	OCT	NOV	DEC
General Awareness (Annually)	X											
Stormwater Team (Annually)	X											

Heritage Permit
100 North 40th Street
Weatherford, Texas

Confidential

30/60/90 Audit Metrics



#	Metric	Unit	Pre-Event	Target	Post Event	30 Day	60 Day	90 Day
1	CMS Score	%	63%	72%	65%	68%	70%	72%
2	CAP Audit Findings Closed	#	0	15	0	2	13	15
3	Periodic LOTO Inspections - Assoc	#	0	14	7	14	14	14
4	Periodic LOTO Inspections - Equip	#	2	17	7	17	17	17
5	Storm Water Training	#	0	4	0	4	4	4
6	Storm Water Qtrly Inspections	#	0	*2	1	X	X	2
7	Storm Water Monthly Facility Inspections	#	0	4	1	2	3	4

Confidential

Environment, Social and Governance (ESG)

People and Community
Energy and Climate
Material Efficiency
Natural Resources

- Four Major Categories for Reporting:
 - People and Community
 - Injury Rates; NOVs Charitable Giving; Employee Satisfaction
 - Energy and Climate
 - Fuel and Electricity; Product Transportation
 - Material Efficiency
 - Water Use; Hazardous Waste Generation
 - Natural Resources
 - Scrap Rate for Steel, Copper and PVC
 - Conflict Minerals

